

RECP

Erosion Control Blankets

Suggested Installation Guidelines (to be distributed with Drawings 1-5)

Step 1 - Site Preparation

Prepare site to design profile and grade. Remove debris, rocks, clods, etc. Surface should be smooth prior to installation to ensure blanket remains in contact with slope.

Step 2 - Seeding

Follow directions from seed bag or manufacturer

Step 3 - Staple Selection

Use a minimum of 6" long by 1" crown, 11-gauge staples to secure blanket to ground

Step 4 - Anchor Trench & Secure Blanket

Excavate a trench 5" x 6" on the top edge of slope. Staple blanket along bottom of trench, being sure to leave extra netting to go over trench once filled. Fill trench and compact soil. Fold blanket over trench and secure with staples.

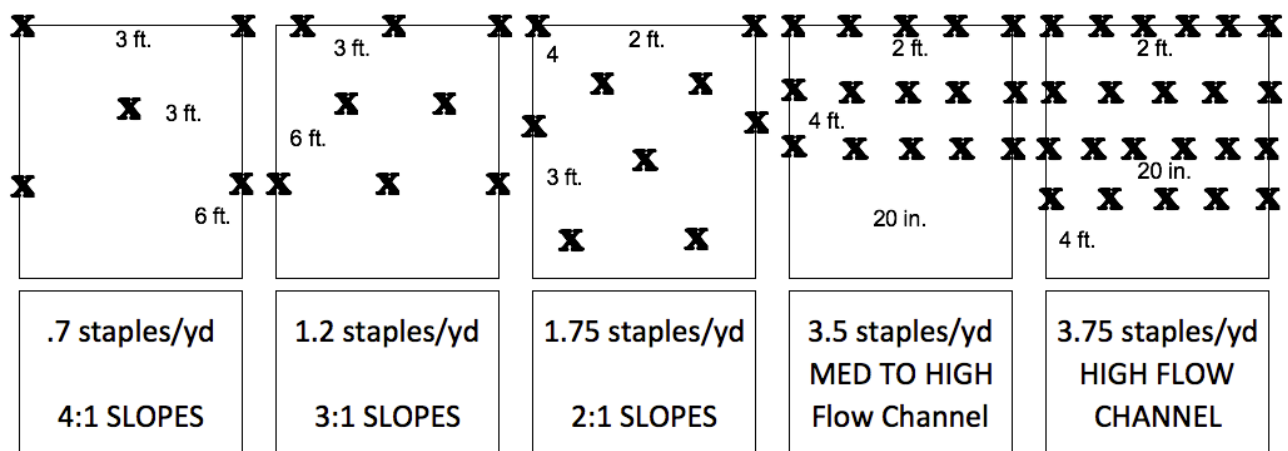
Step 5 - Secure Body of Blanket

Secure blanket with staples every 8" along the width of the roll, estimated 25 staples per roll.

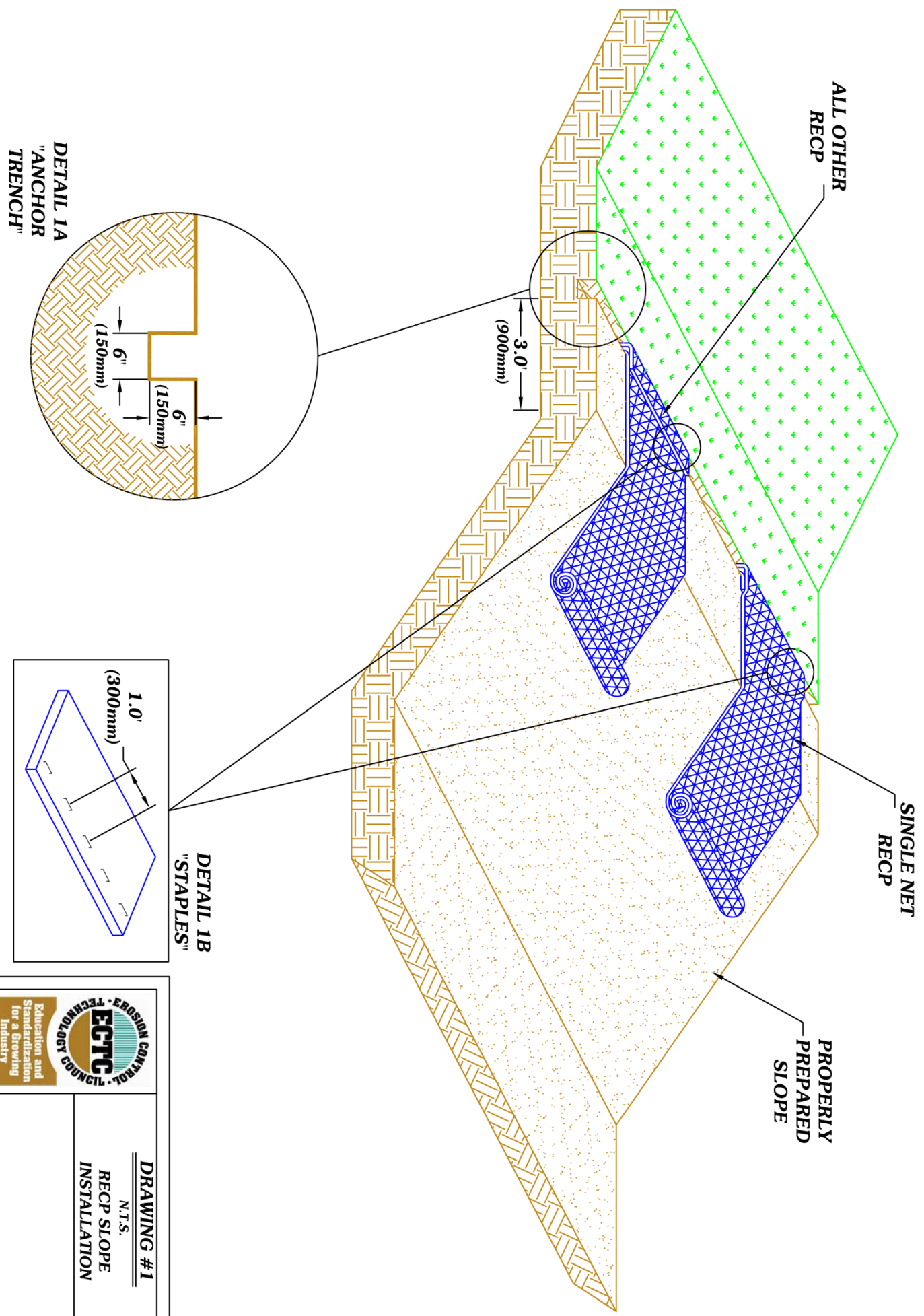
Step 6 - Complete Installation


If overlapping rolls along a slope, make sure the upper blanket overlaps the lower blanket by at least 3".

Suggested Staple Pattern for Installation:

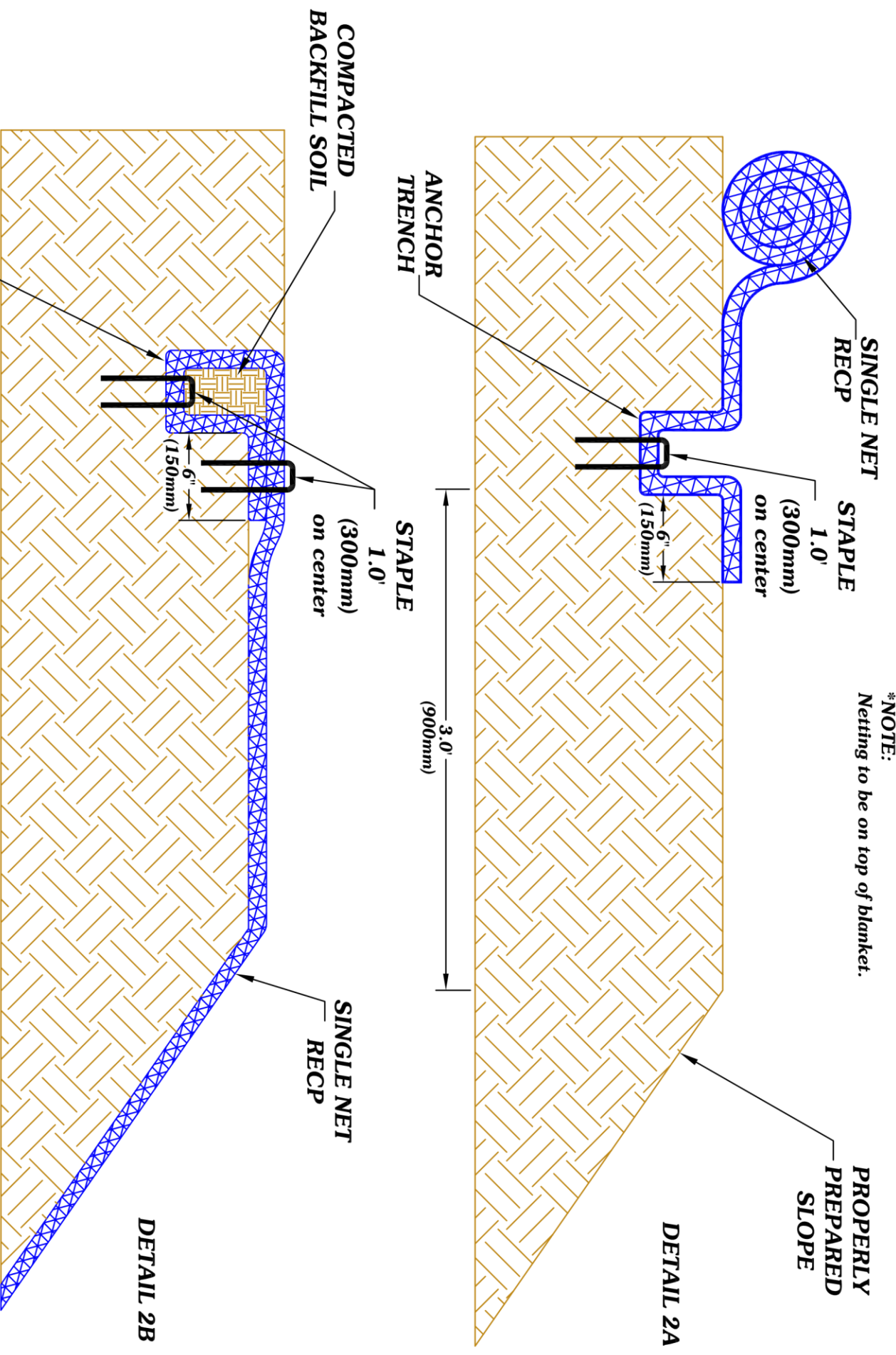


***NOTE:**
 Install the RECPs 3ft. (900mm) beyond the shoulders of the slope onto flat final grade. Secure roll end with a single row of staples on 1 ft. (300mm) centers.



	DRAWING #1 N.T.S. RECP SLOPE INSTALLATION

***NOTE:**
Netting to be on top of blanket.



**PROPERLY
PREPARED
SLOPE**

DETAIL 2A

3.0'
(900mm)

**STAPLE
1.0'**
(300mm)
on center

6"
(150mm)

**SINGLE NET
RECP**

DETAIL 2B

**ANCHOR
TRENCH**


**COMPACTED
BACKFILL SOIL**

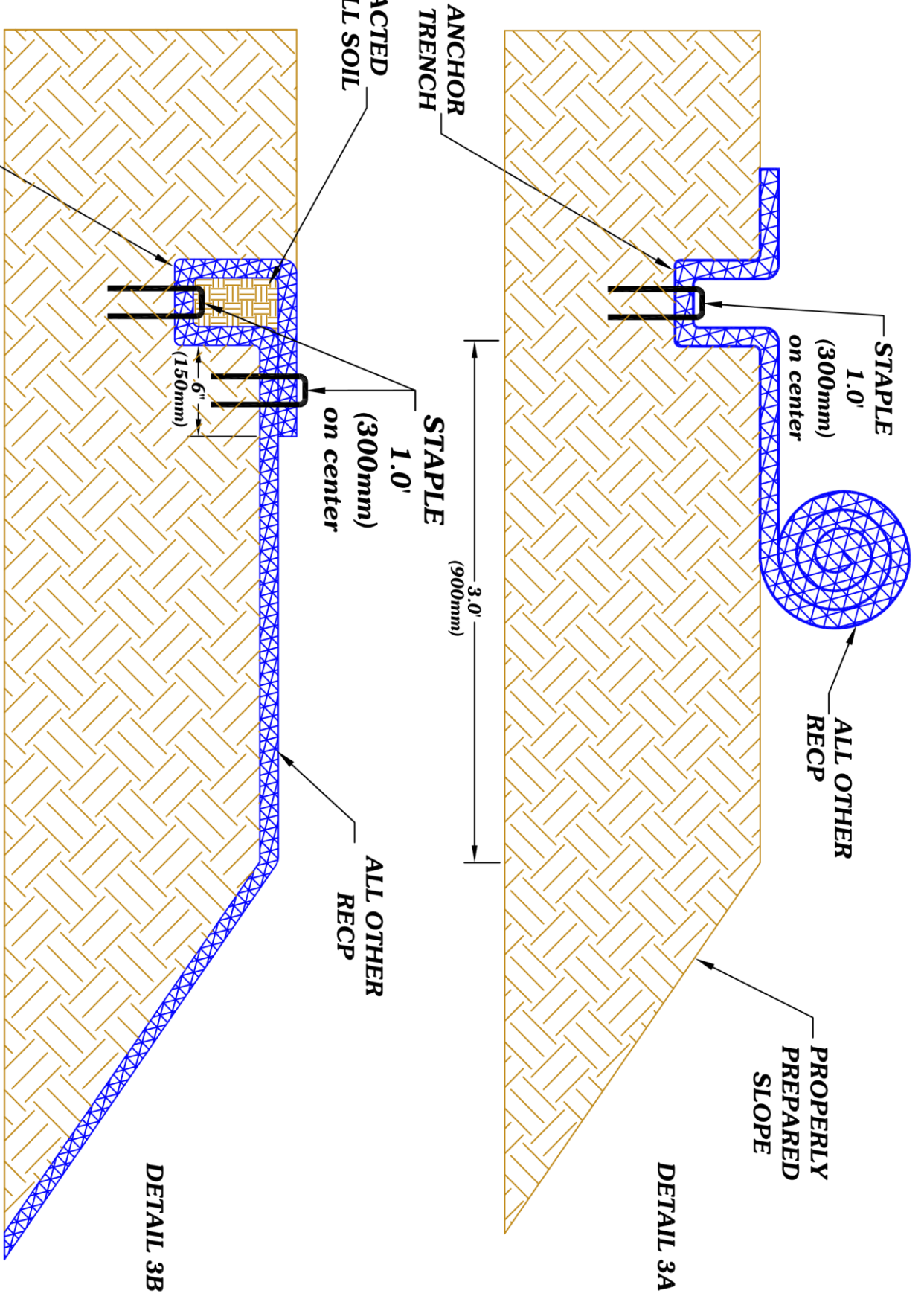
**SINGLE NET
RECP**

**STAPLE
1.0'**
(300mm)
on center

6"
(150mm)

**ANCHOR
TRENCH**

	<p>DRAWING #2 N.T.S. RECP SLOPE INSTALLATION</p>



ANCHOR TRENCH

COMPACTED BACKFILL SOIL

ANCHOR TRENCH

STAPLE 1.0' (300mm) on center

STAPLE 1.0' (300mm) on center

ALL OTHER RECP

PROPERLY PREPARED SLOPE

3.0' (900mm)

ALL OTHER RECP

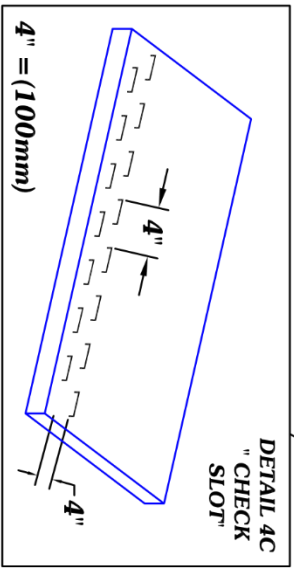
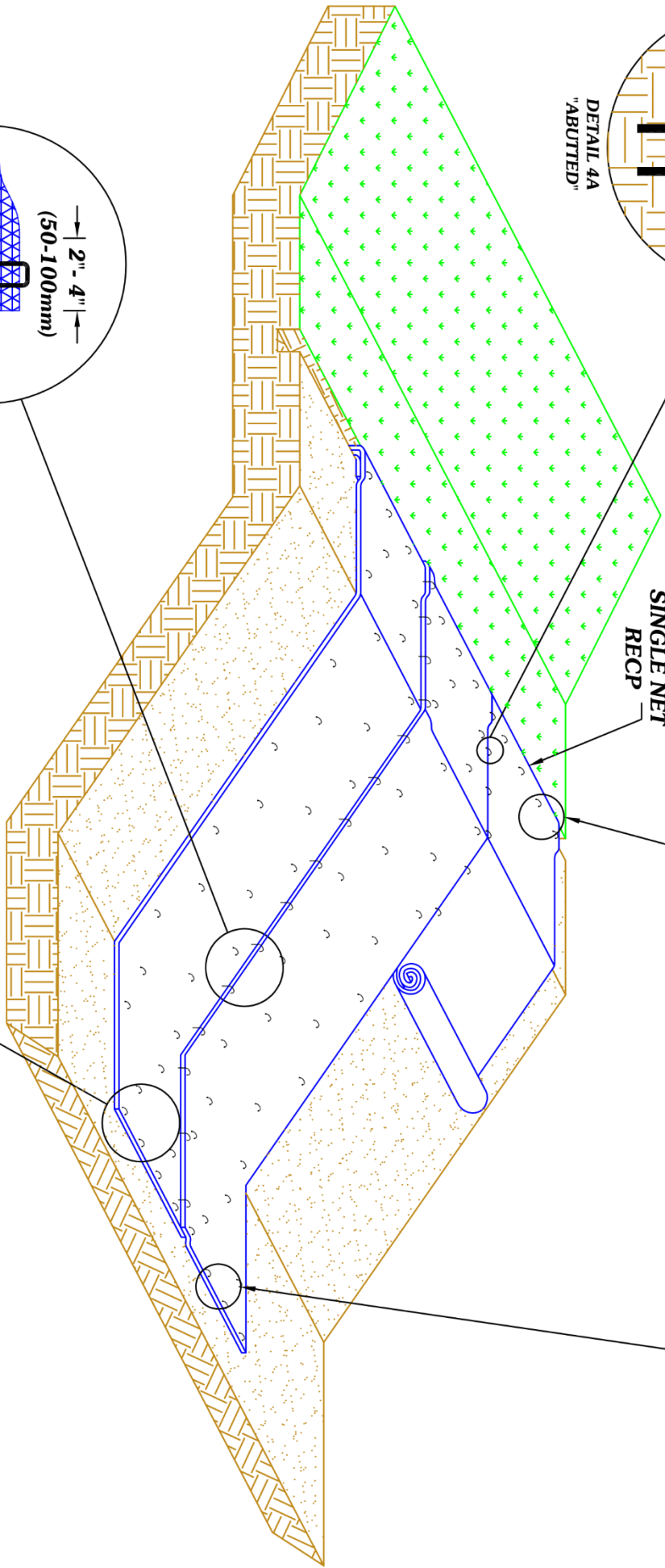
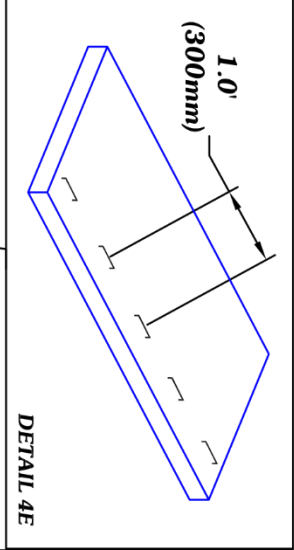
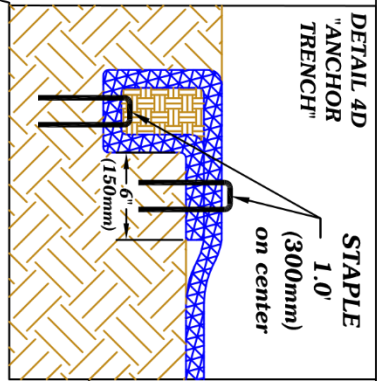
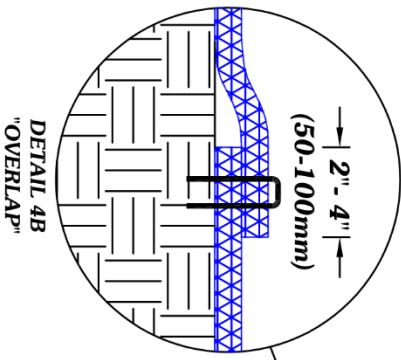
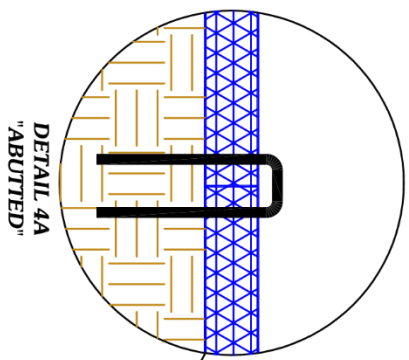
DETAIL 3B


DETAIL 3A



DRAWING #3
N.T.S.
RECP SLOPE
INSTALLATION

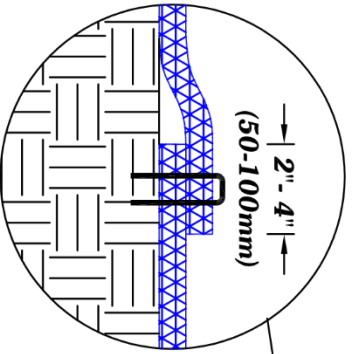
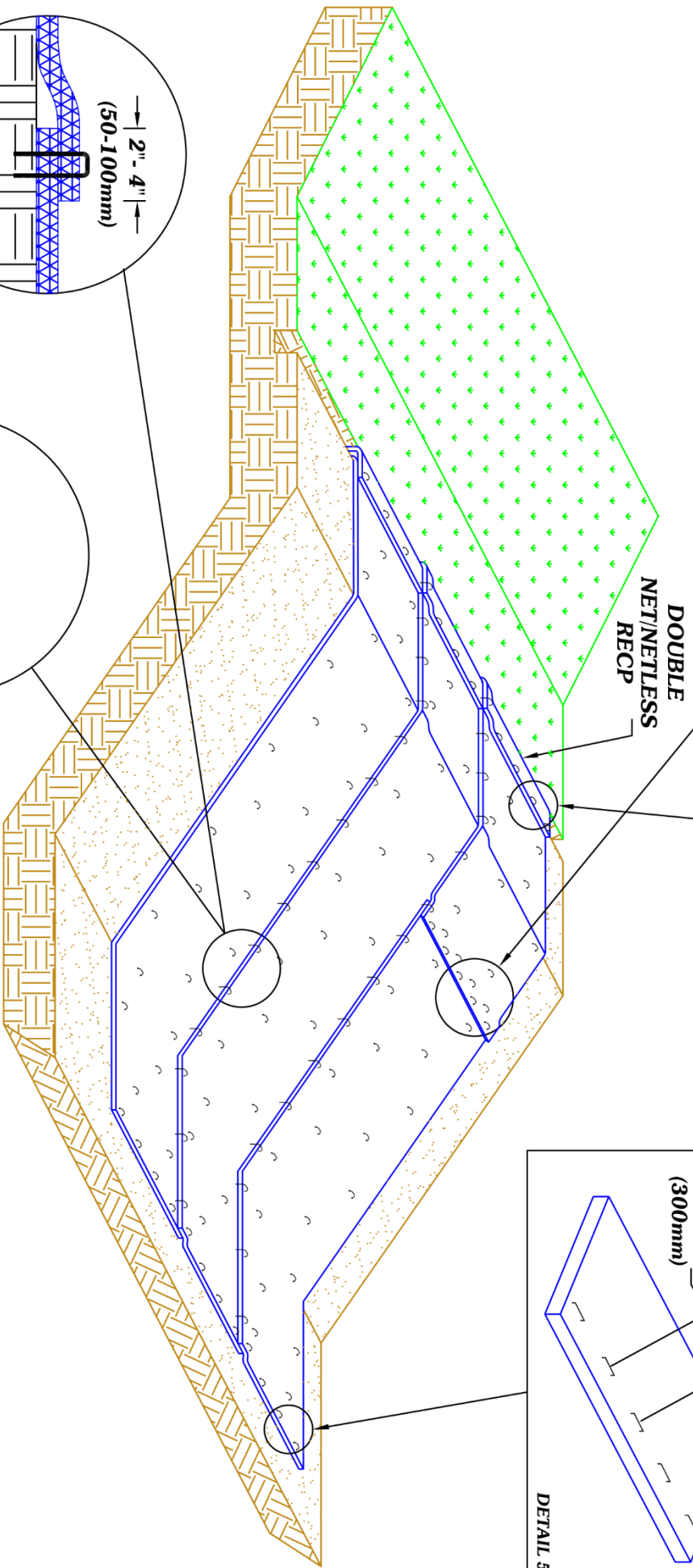
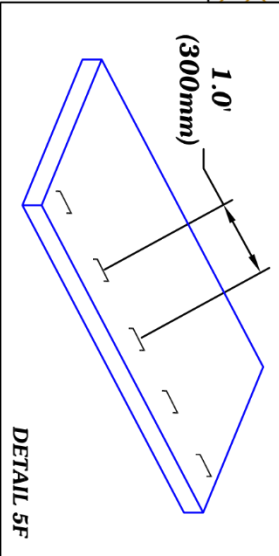
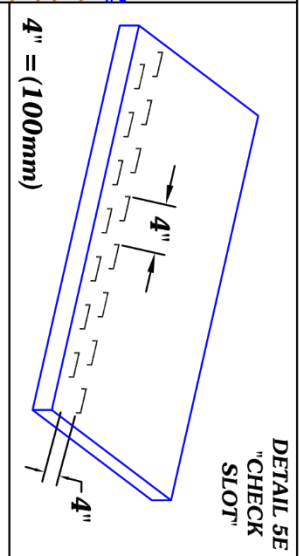
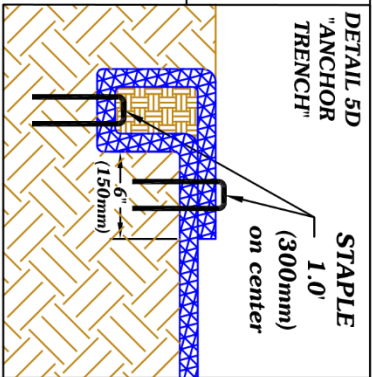
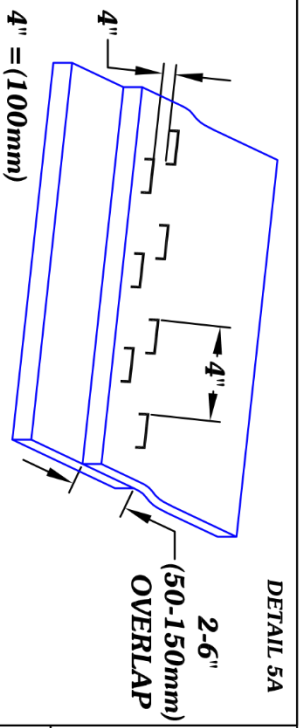
***NOTE:**
Use manufacturer's recommended staple pattern.



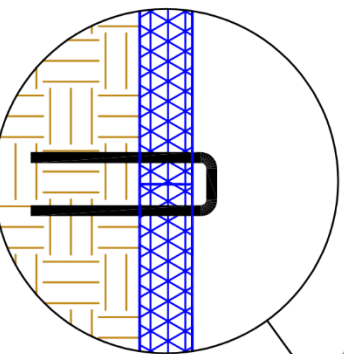


Education and
Standardization
for a Growing
Industry

DRAWING #4
N.T.S.
SINGLE NET
INSTALLATION



OR



EROSION CONTROL TECHNOLOGY
ECTC
Education and Standardization for a Growing Industry

DRAWING #5
N.T.S.
**DOUBLE NET/NETLESS
INSTALLATION**